

Specification Sheet

< CABLE UPBOARD, Band 3 >

Part No.: PL-UBDCAB33.1SPSP

Date	2023. 04. 02.
Spec. Sheet No.	SPL-UBDCAB33.1SPSP

Revision History

Authors	Date	Revision	Notes
PY LEE	2023.04.02.	A	First Issue

Written by	Approved by
PY LEE	DK BAEK

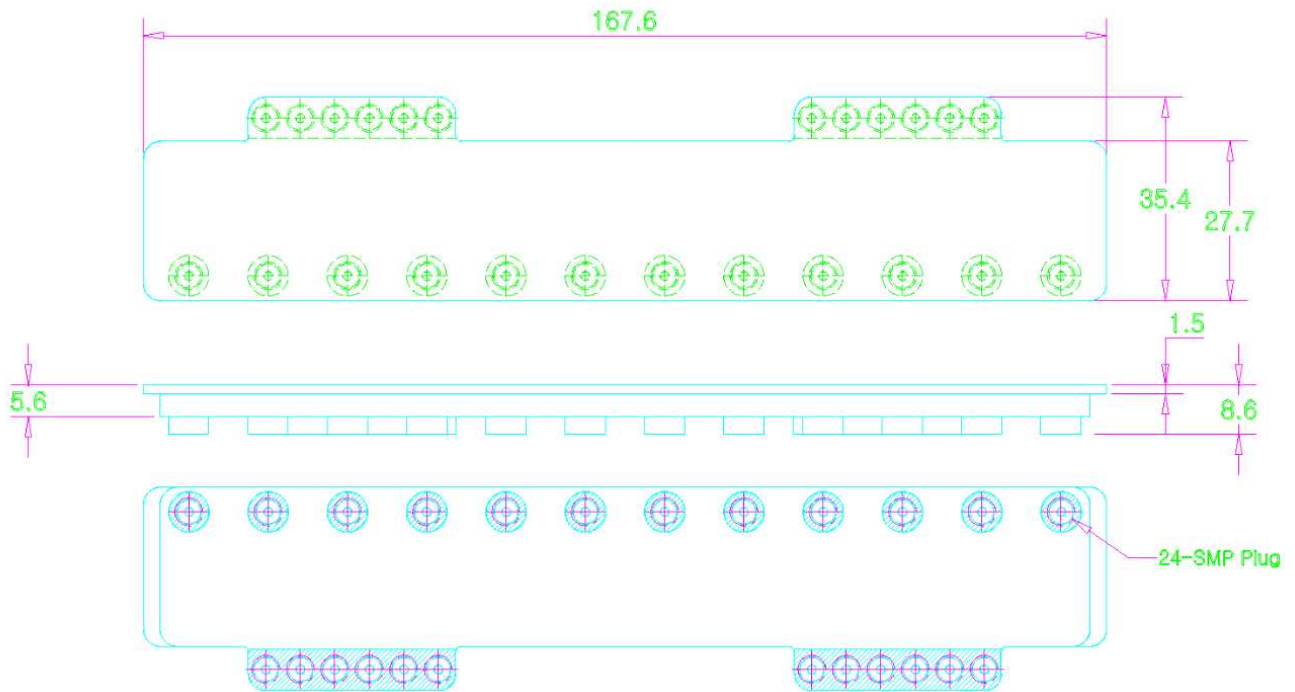
1. Electrical Specifications

Parameter	Specification	Remark
Frequency Range	1~5 GHz	
Channels	12 ea	
Insertion Loss	1.8 dB max.	
VSWR	1.5 : 1 max.	
Impedance	50 Ω	

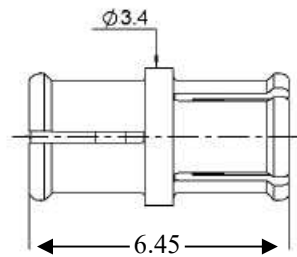
2. Mechanical Specifications

Parameter	Specification	Remark
Dimension (WxDxH)	167.6 X 35.4 X 8.6(mm)	Refer to drawing
Connector	SMP Plug	
Finish	Electroless Nickel Plating	
Weight	1.0 Kg max.	
Accessories	SMP Bullet, 24ea	

3. Outline Drawing



4. Accessories



< SMP Bullet >